



...KNOWLEDGE IS POWER
...KNOWLEDGE IS SAFETY
...KNOWLEDGE IS HAPPINESS

Thomas Jefferson 1817



EBVS HELP YOU BUY THE RIGHT RAMS:

- > Ensure you buy the genes that make you money
- > Improve accuracy of selection for profit drivers
- > Use a well thought out breeding objective and good stockmanship

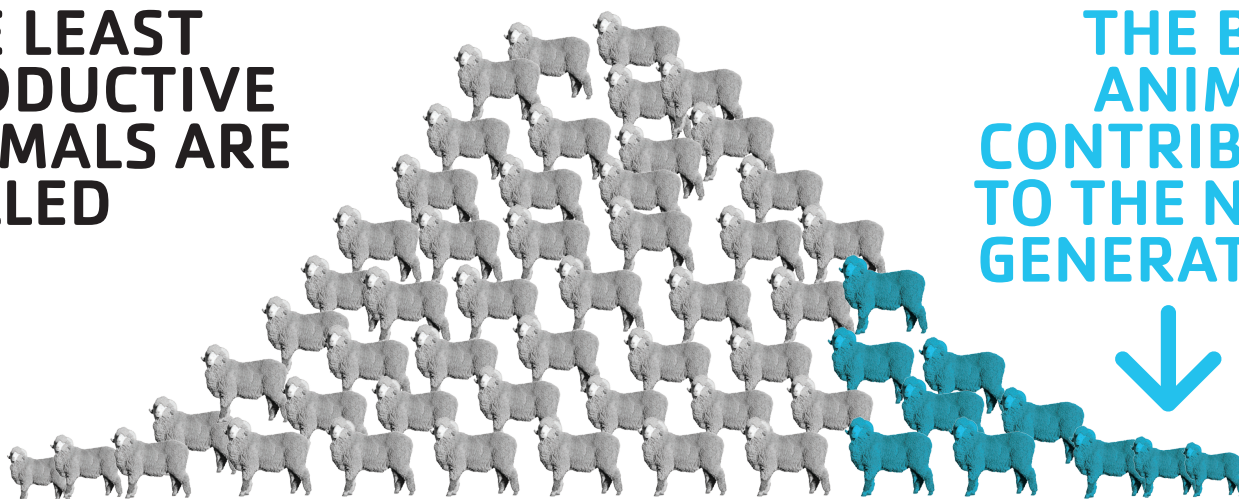
&



EID TO HELP KEEP THE RIGHT EWES:

- > High level of data accuracy
- > Traceability for life
- > No need for additional tags or raddle
- > Performance data at the animal level
- > Make decisions on accumulated individual data

THE LEAST
PRODUCTIVE
ANIMALS ARE
CULLED



THE BEST
ANIMALS
CONTRIBUTE
TO THE NEXT
GENERATION





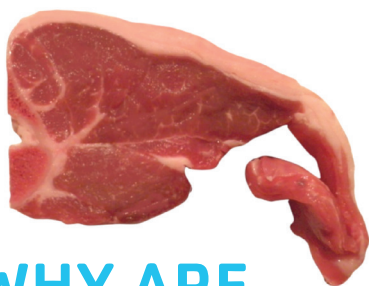
UNLOCKING THE
PERFECT SHEEP^(S)

MAKE EVERY RAM BUYING DECISION A GOOD ONE...

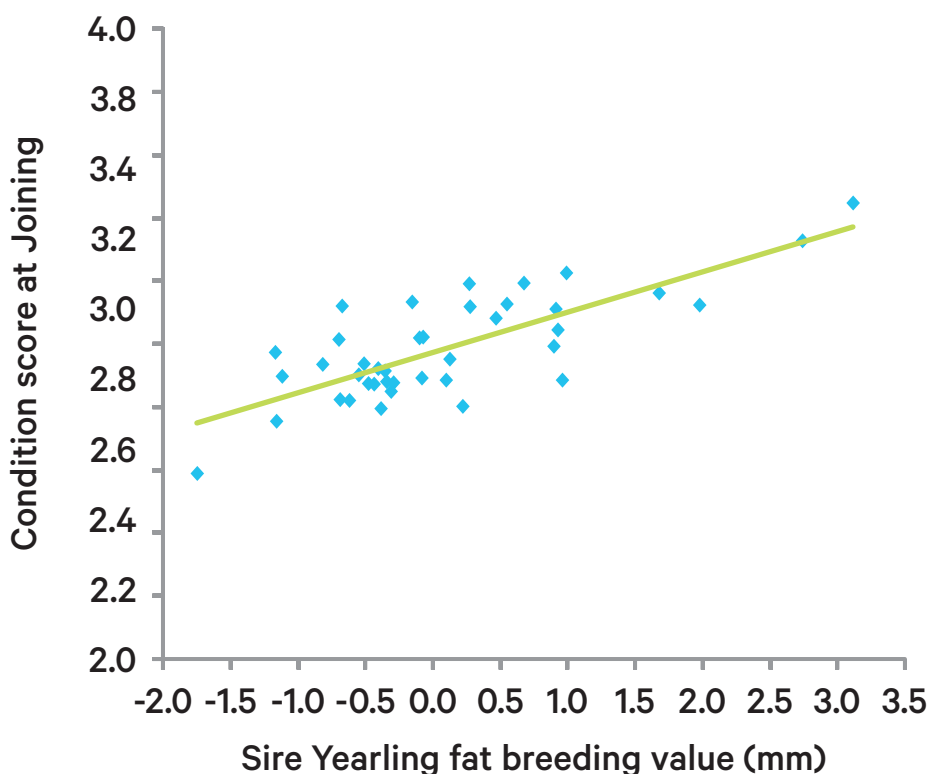


OMARAMA STATION BUYS RAMS FROM EARNSCLEUGH WITH A BALANCE OF LOOKS AND PERFORMANCE.

	2013 drop ram average	Industry benchmark
Yearling weight	+5.7kg	Top 30%
Fleece weight	+10%	Industry Average
Muscle	+1.3mm	Top 20%
Fat	+0.3mm	Top 40%
Lambs weaned	+7%	Top 15%



WHY ARE
MUSCLE & FAT
PART OF RAM
SELECTION?



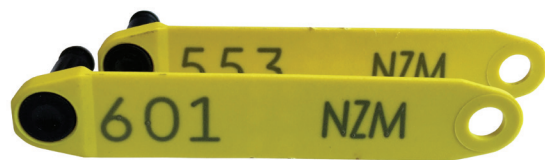


UNLOCKING THE
PERFECT SHEEP^(S)

...KNOWLEDGE IS POWER
...KNOWLEDGE IS SAFETY
...KNOWLEDGE IS HAPPINESS

Thomas Jefferson 1817

The benefits of making data driven decisions are mostly small, but they accumulate to make a significant difference.

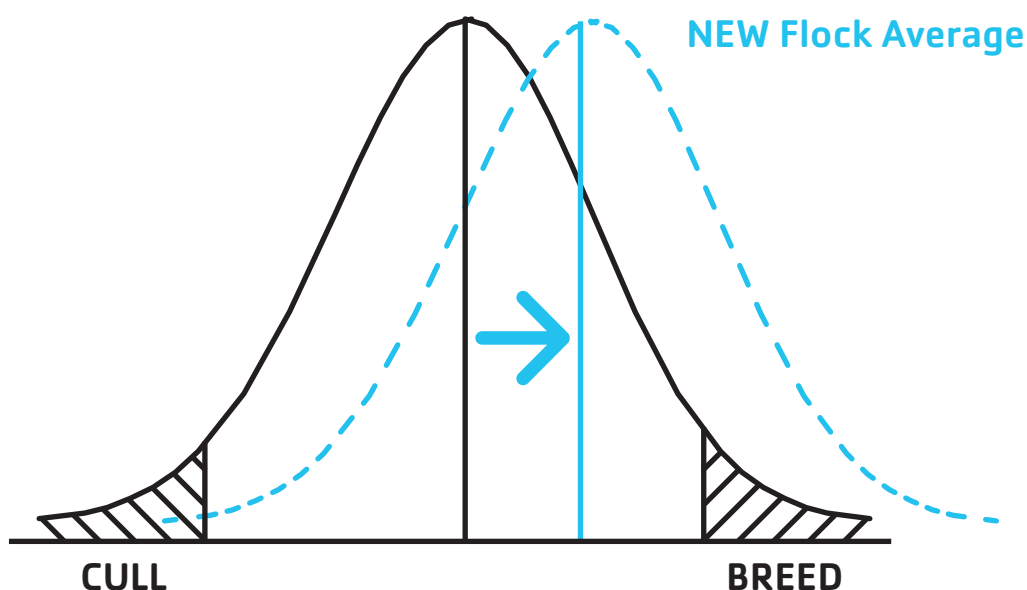


OMARAMA STATION HAVE ALREADY LEARNT:

1. How responsive their ewes are to liveweight at tupping
2. Which ewes are most likely to deliver twin lambs
3. At a similar liveweight, their preferred type of ewes are producing more lambs

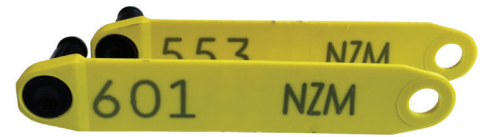
GOING FORWARD:

1. Further reproduction and liveweight data will determine the animals to keep
2. Fleece information from individuals can be added to the data
3. Environmental effects such as birth type will be recorded and taken into account





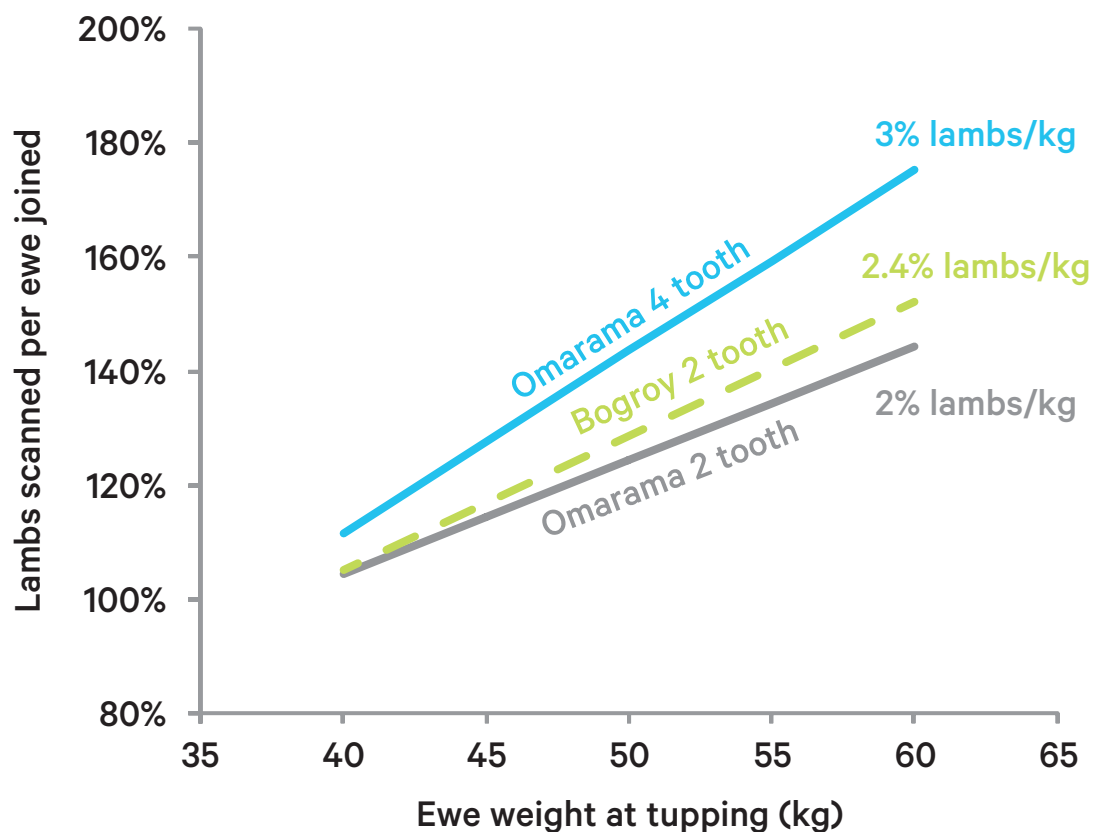
UNLOCKING THE
PERFECT SHEEP^(S)



Is it worth getting extra weight
on young ewes at Omarama?

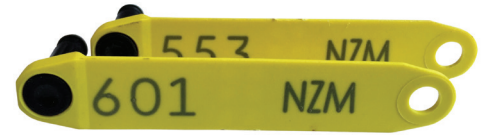


Ewe weight collected at
tupping, scanning and weaning.
Pregnancy status recorded
at scanning.





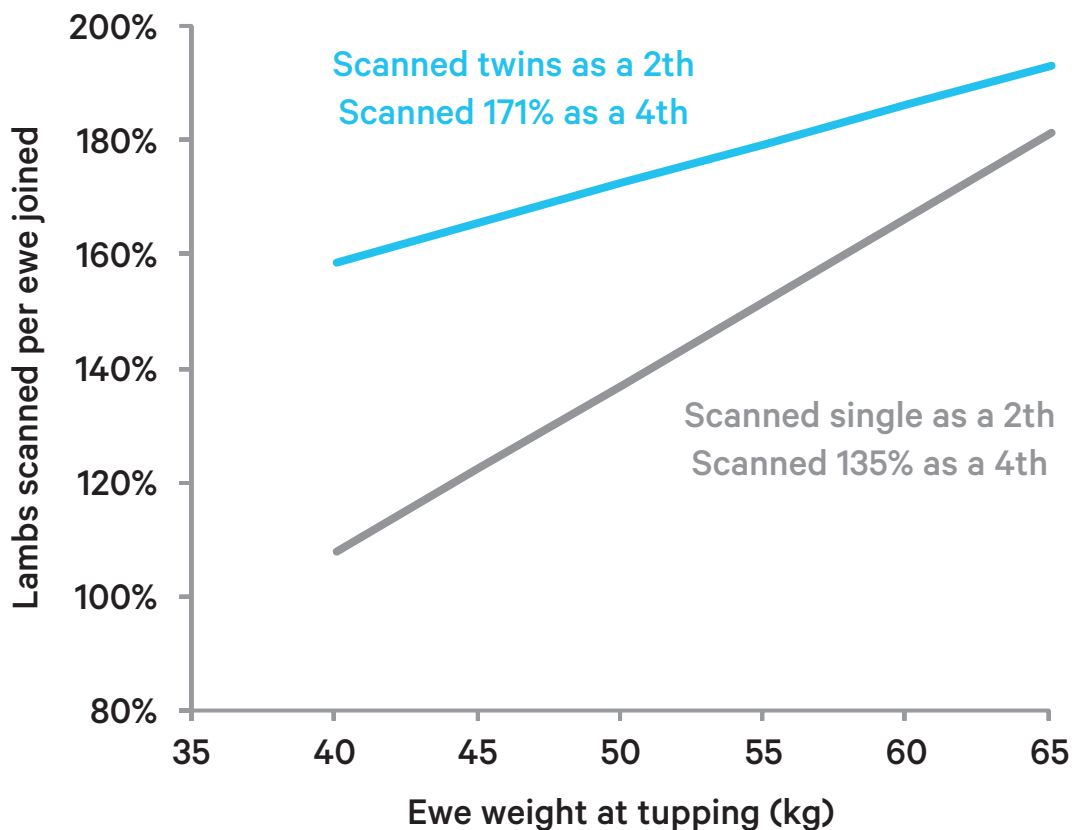
UNLOCKING THE
PERFECT SHEEP^(S)



Do ewes that scan with twins
as two tooth's scan with twins
the next year?

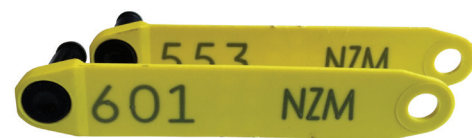


Ongoing collection of ewe
scanning and liveweight data -
efficiently and error free.





UNLOCKING THE
PERFECT SHEEP^(S)



Is the type we are selecting as preferred replacements the right type?



Alistair Campbell classing ewe hoggets annually.

Classer's grade recorded against the EID along with performance data.

Lambs per ewe to the ram

	Royal	Plain	Heavy
2 tooth	118%	112%	112%
4 tooth	160%	135%	126%

Weight of ewes at tuppung (kg)

	Royal	Plain	Heavy
2 tooth	46.4	45.8	45.5
4 tooth	48.4	48.9	47.8



ROYALS

Ideal type for Omarama Station:
Good carcass,
low wrinkle, long
stapled wool



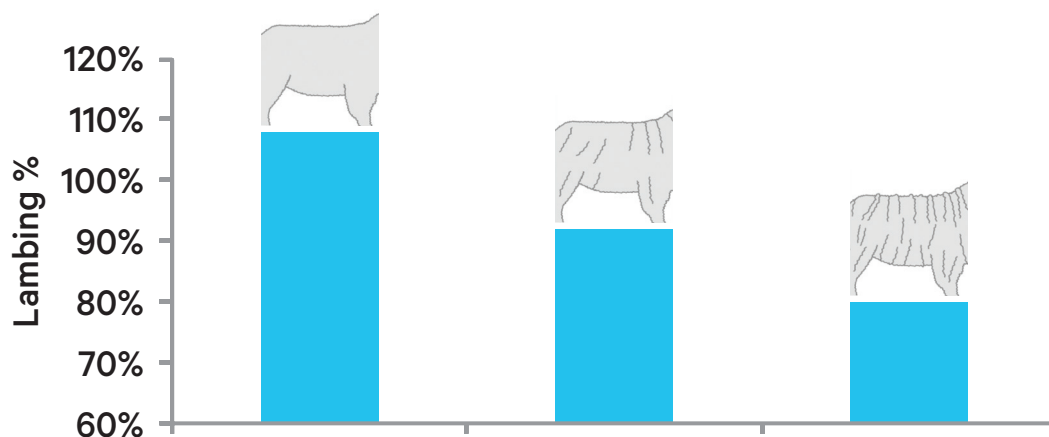
PLAIN

OK carcass, OK
wool, shorter staple



HEAVY

Lesser carcass,
wrinkly, short
stapled wool



WRINKLE
SCORE vs
LAMBING %